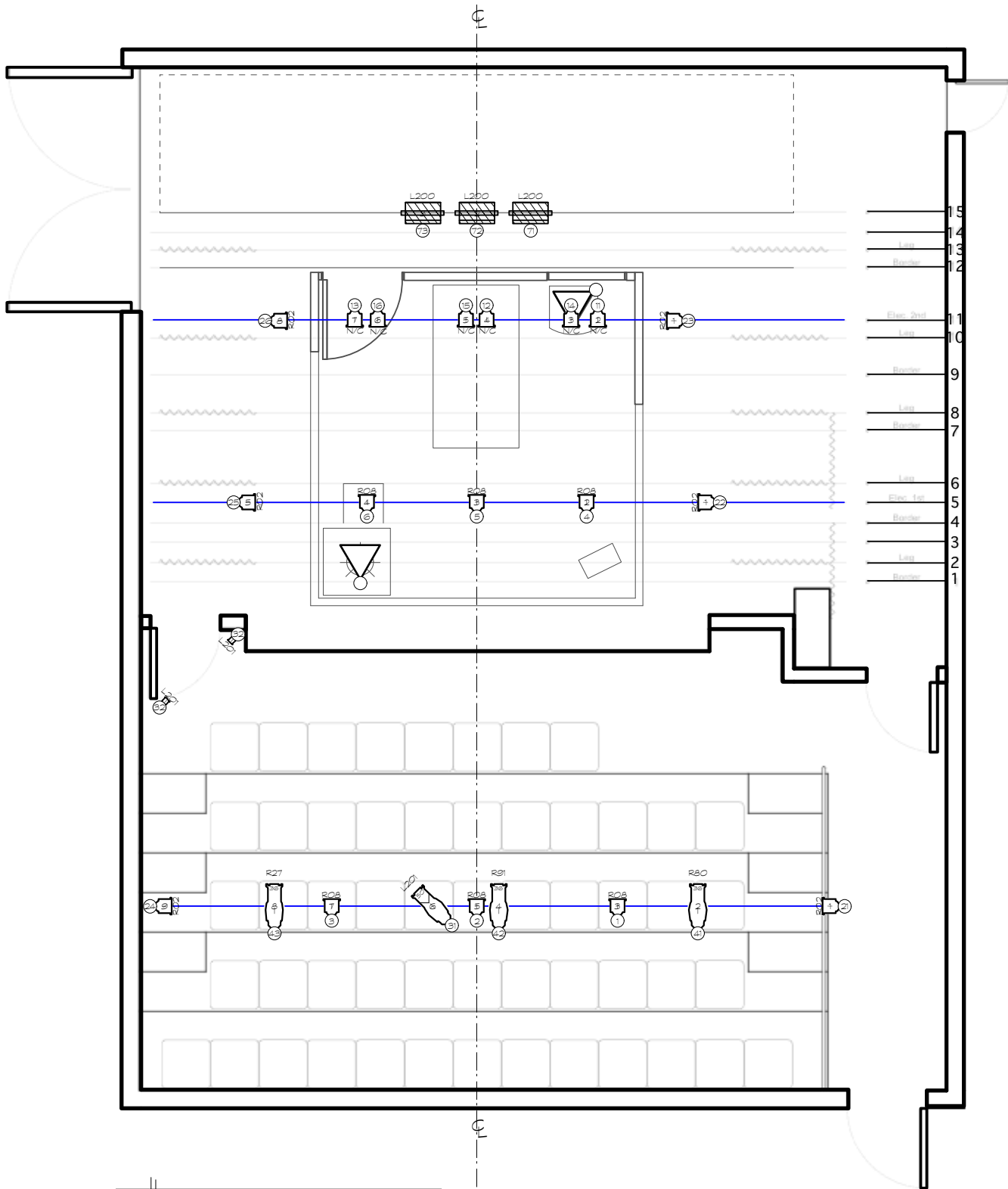


Sulide

Channel Hookup

Channel	Instrument Type	Wattage	Purpose	Color	Position	Unit Number
1	6" Fresnel	750	DL Front	RO8	FOH	3
2	6" Fresnel	750	DC Front	RO8	FOH	5
3	6" Fresnel	750	DR Front	RO8	FOH	7
4	6" Fresnel	750	L Front	RO8	1st Electric	2
5	6" Fresnel	750	C Front	RO8	1st Electric	3
6	6" Fresnel	750	R Front	RO8	1st Electric	4
11	6" Fresnel	750	DL Bx	N/C	2nd Electric	2
12	6" Fresnel	750	DC Bx	N/C	2nd Electric	4
13	6" Fresnel	750	DR Bx	N/C	2nd Electric	7
14	6" Fresnel	750	L Bx	N/C	2nd Electric	3
15	6" Fresnel	750	C Bx	N/C	2nd Electric	5
16	6" Fresnel	750	R Bx	N/C	2nd Electric	6
21	6" Fresnel	750	DS L Side	RO2	FOH	1
22	6" Fresnel	750	SL Side	RO2	1st Electric	1
23	6" Fresnel	750	UL Side	RO2	2nd Electric	1
24	6" Fresnel	750	DS R Side	RO2	FOH	9
25	6" Fresnel	750	SR Side	RO2	1st Electric	5
26	6" Fresnel	750	UR Side	RO2	2nd Electric	8
31	50° Source 4	575	TV Front Special	L201	FOH	6
32	3" Fresnel	300	TV Man Sides	L201	TV Flat	1
	3" Fresnel	300	TV Man Sides	L201	TV Flat	2
41	36° Source 4	575	TV Explosion Blue	R80	FOH	2
42	36° Source 4	575	TV Explosion Green	R91	FOH	4
43	36° Source 4	575	TV Explosion Red	R27	FOH	8
71	Sky Cyc	1kw	Cyc	L200	Floor	1
72	Sky Cyc	1kw	Cyc	L200	Floor	2
73	Sky Cyc	1kw	Cyc	L200	Floor	3



Instrument Key		36° Source Four 575w
		50° Source Four 575w
		6' Fresnel 750w
		3' Fresnel 300w
		Altman Sky Cyc 1K

Color Unit per Channel

<p>Suicide in the Key of Infomercial</p> <p>By: Jared Gore</p> <p>LIGHT PLOT</p> <p>DIRECTOR: Tim O'Neal</p> <p>SCENIC DESIGNER: Kevin Griffith</p> <p>LIGHTING DESIGNER: Diane K. Baas</p> <p>SCALE: 1/2" = 1' - 0"</p> <p>DATE: 8 December 2014</p> <p style="text-align: right; font-size: x-small;">Revised:</p>	<p>PAGE</p> <p>1 of 1</p>
---	---------------------------